

Research: **Castles of the World** – *Setting for a Story*

Research Task:

This work is to help build your **ability to identify key information and make brief notes.**

All writer's research to make sure their story feels true even when it is full of fantastical ideas!

1. **Watch** and **talk** about the castles in the youtube clip.

<https://www.youtube.com/watch?v=bgRE3dhmWMA>

2. **Read** and **talk** about the castles in this powerpoint and make brief notes of key information.
3. Practise your writing skills: **write descriptive phrases.**

[Try **looking up** words that mean the same, '**synonyms**', to broaden your vocabulary.]

4. **Extended research** on Dover Castle. Watch and make notes. *[A very old castle - might help with ideas for the time period for your story.]*

<https://www.youtube.com/watch?v=hCz4-1uRNK8>

<https://www.youtube.com/watch?v=KIHq6VQtY7E>



Key Words:

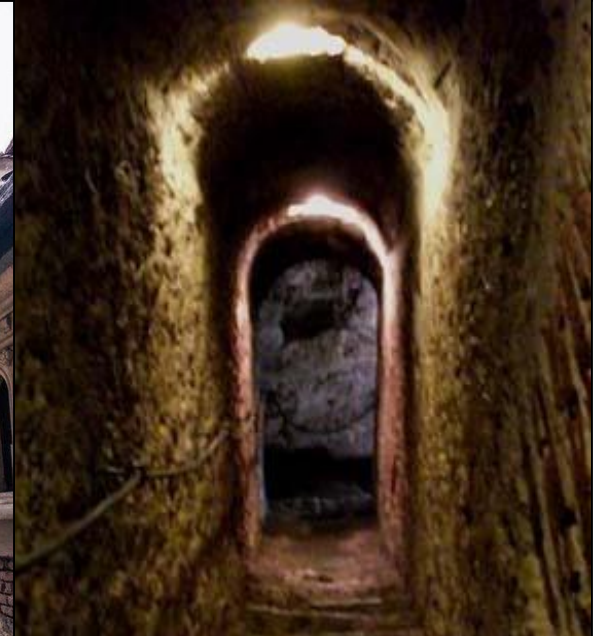
Extended research = finding out detailed information from a range of sources.

castle = a strong building which can withstand an attack usually with thick walls and battlements.

setting = a place where a story happens

descriptive phrase = gives detailed information about something usually containing adjectives or verbs.

Bran Castle [Count Dracula's Castle], Transylvania, Romania



A good setting for a 'gothic' tale?

[Gothic = atmosphere of mystery, horror and spooky remote location.]

Task: Practise making brief notes of key information.

[Either in this space OR in your workbook.]

Bran Castle [Count Dracula's Castle], Transylvania, Romania

A wooden castle was first built on this site in 1212 but was destroyed an invading army. The castle was rebuilt in stronger stone in 1377 by the Saxons. Unlike most castles, this castle was not build for royalty to live in, it was built to protect the country against raids from its enemies and also for border control, stopping any traders who wanted to pass through. The evil Vlad the Impaler, the real person in history Count Dracula is based on, did not actually ever live here but stayed in the castle many times. The castle is now a museum.

Fortress of Guaita, San Marino, Italy



A good setting for a romantic or fantasy type story maybe?
[fantasy = plot could not happen in real life. Maybe involving magic or witchcraft.]

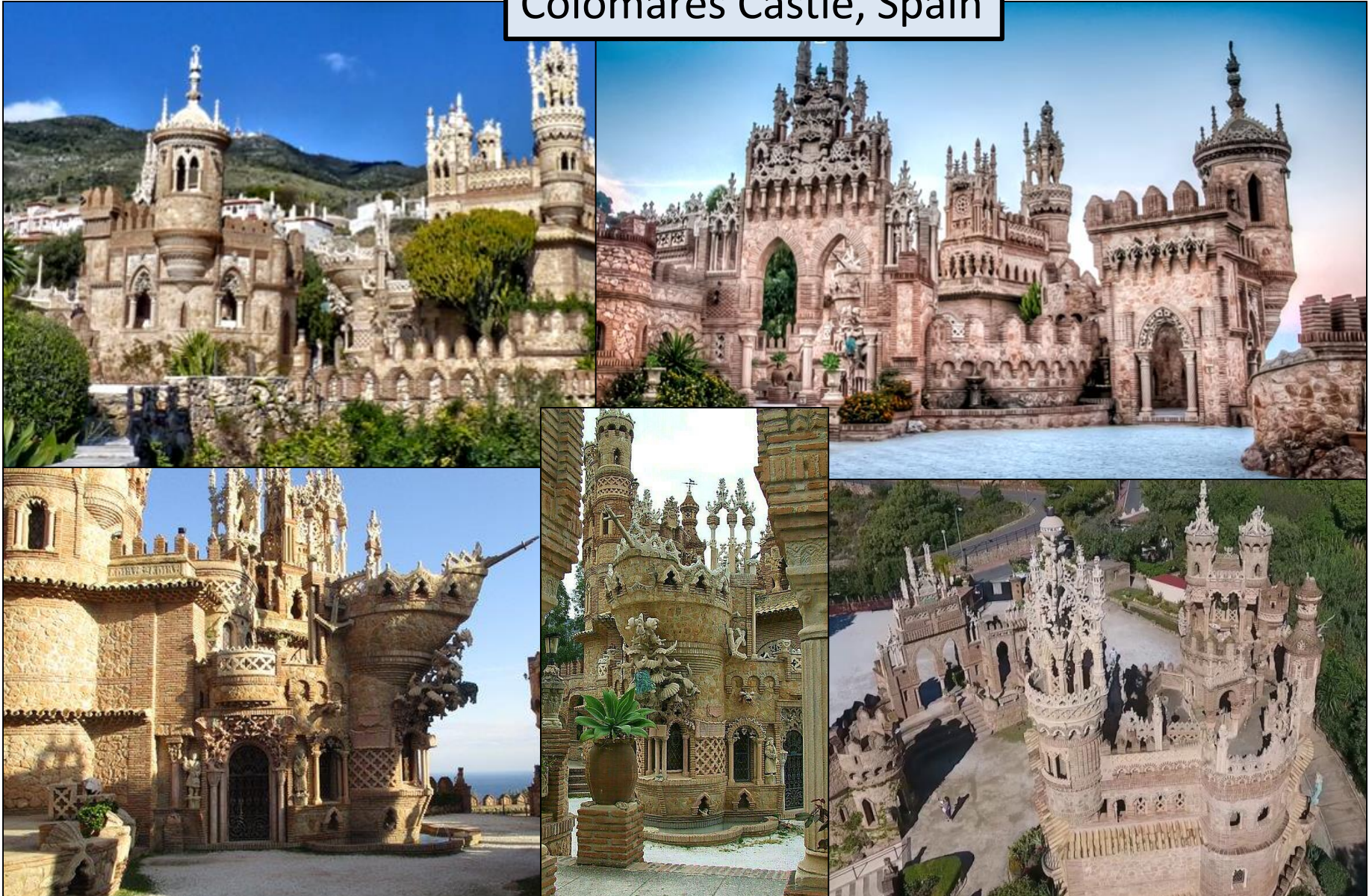
Task: Practise making brief notes of key information.

[Either in this space OR in your workbook.]

Fortress of Guaita, San Marino, Italy

This is one of three towers built in the 11th century on Mount Titano. It has a double wall surrounding it which meant it could protect the townspeople well during a siege but also made it so secure that it could be a prison too. Did you know, some rooms were used as a prison up until the 1970s! The castle still has two big artillery guns from World War II on it's battlements. It is so famous that it even appears on the national flag! This fortress is now on the world's heritage list which means it is important and must be protected.

Colomares Castle, Spain



This castle (or castillo in Spanish!) *living there!*

[monument = statue or building built to remember an important person]

Task: Practise making brief notes of key information.

[Either in this space OR in your workbook.]

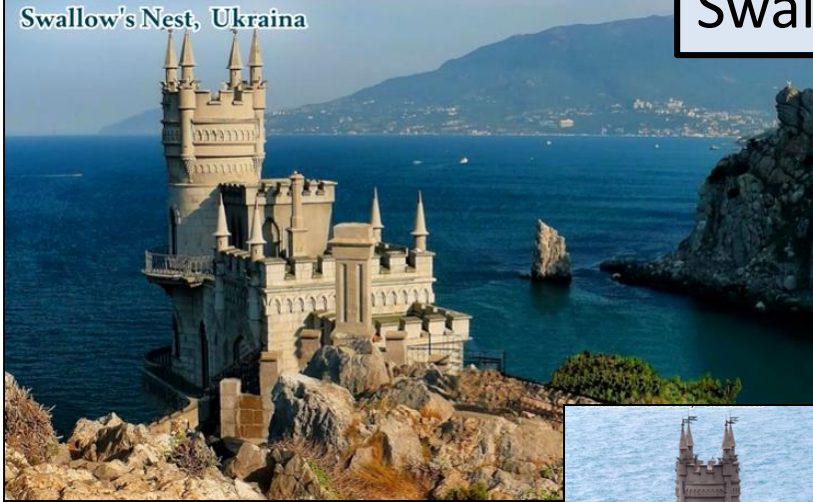
Colomares Castle, Spain

This castle (or castillo in Spanish!) is not really a castle, it is a monument and was built quite recently, between 1987 - 1994. It is the biggest monument in the world covering a area of 1,500 metres but it also has the world's smallest church. If you look carefully you can see that you can see that some parts of the castle look like the front of a ship. This is because this massive building is a monument to Christopher Columbus, the explorer who was famous for having discovered America. *We now know that people were already living there!*

[monument = statue or building built to remember an important person or event]

Swallow's Nest, Ukraina

Swallow's Nest, Ukraina



If you were rich enough to build a castle, what would it look like?

Task: Practise making brief notes of key information.

[Either in this space OR in your workbook.]

Swallow's Nest, Ukraine

There used to be a wooden cottage on this site but when the land was bought by a very wealthy businessman he wanted to build something a bit more grand and something that would stand up to the might of the Black Sea in winter! He decided to build a decorative castle and work was finally completed in 1911. This castle is built on top of the 40 metre high Aurora Cliff and is not very big. It has an entrance hall, a guest room and a stairway to the tower which has two bedrooms on two different levels. There is an observation deck that surrounds the building so that visitors are able to enjoy the awe-inspiring view.

Eilean Donan Castle, Scotland



A good setting for a story? List the colours you can see. List the sounds you might hear.

Task: Practise making brief notes of key information.

[Either in this space OR in your workbook.]

Eilean Donan Castle, Scotland

A castle was built on this island to protect the lands of Kintail against the Vikings who controlled most of the North of Scotland between 800 and 1266. This area was a separate Sea Kingdom of the Lord of the Isles. The sea was the main highway and so this castle was in the perfect defensive position. The castle has expanded and contracted over the centuries to accommodate the number of troops stationed there. During medieval times the castle was probably at its largest, with towers and a defensive wall that covered nearly the whole island. A firing platform for cannons was added by the 16th century.

Corvin Castle, Romania



Corvin Castle, Romania



Lichtenstein Castle, Germany



Rock of Cashel, Ireland



When you write your story could one of these be the **setting**? Practise your writing skills, **write a descriptive phrase for each image.** *[Remember to use all your sense.]*

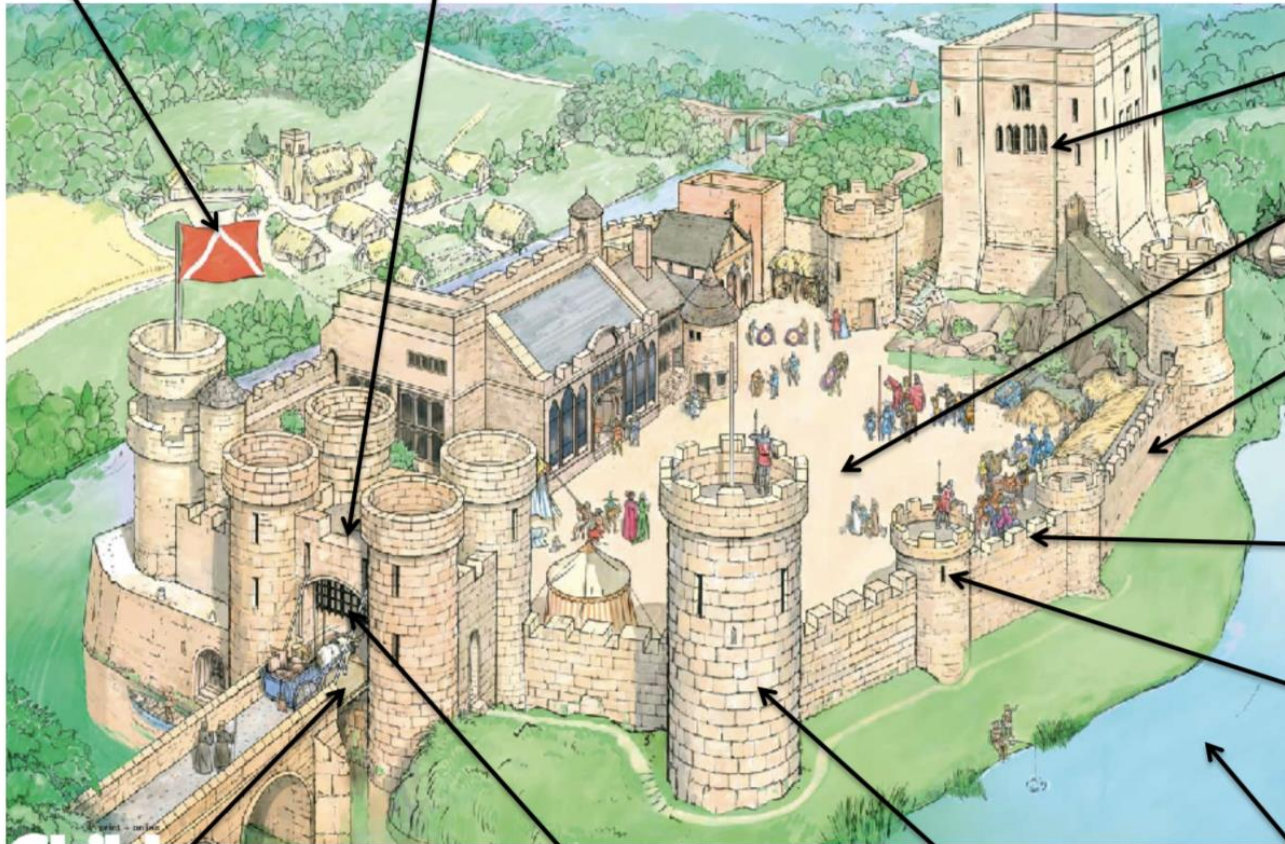


When you write your story could one of these be the **setting**? Practise your writing skills, **write a descriptive phrase for each image.** *[Remember to use all your senses.]*

Castles

Flag

Gatehouse



Keep

Bailey

Curtain Wall

Battlements

Arrow Slit

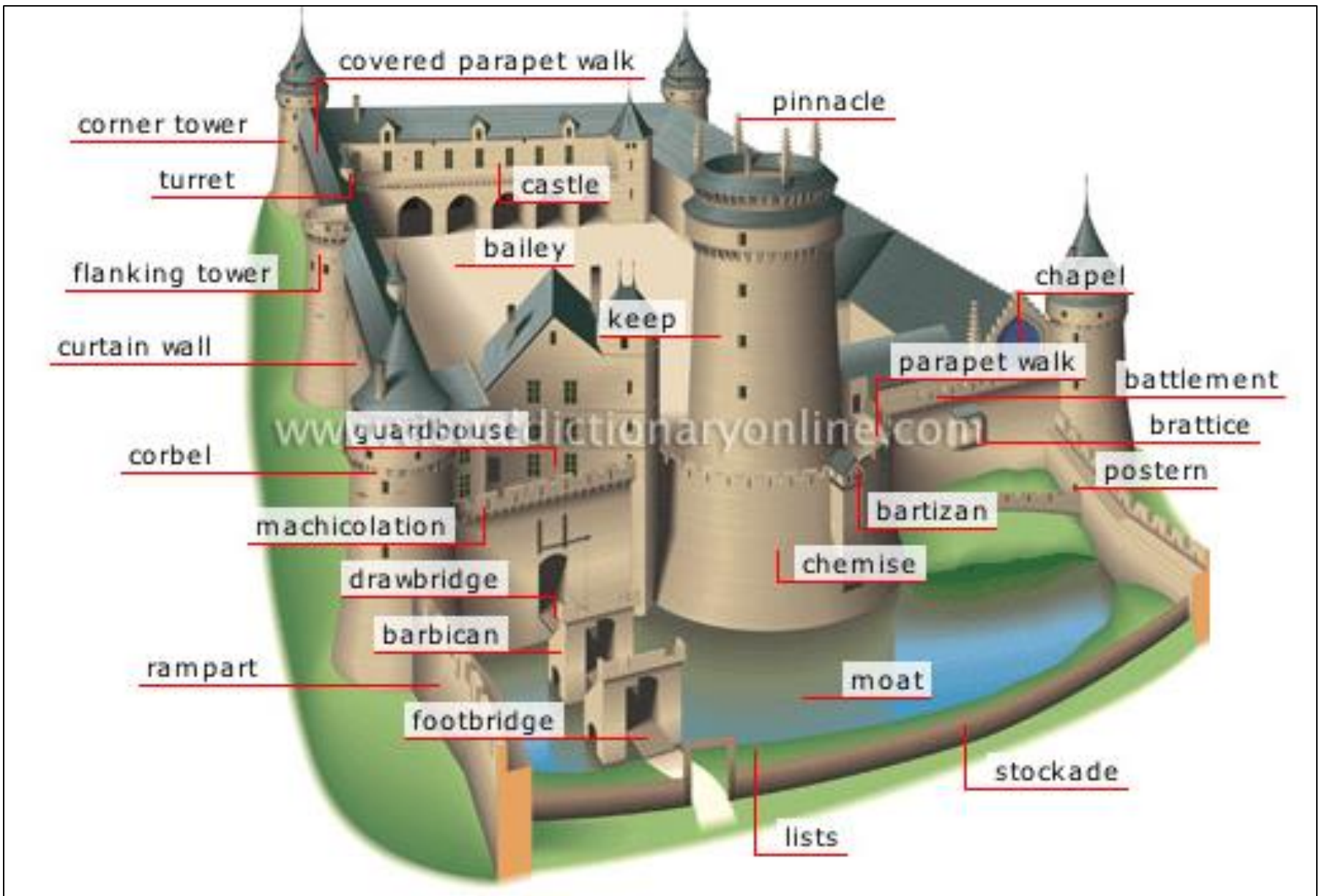
Drawbridge

Portcullis

Tower

Moat

Key Terminology for Castles: Use these to help your reader believe your story.



Key Terminology for Castles: A bit more detailed for even more realism!