

# New build update

April 28th 2021

A dark blue diagonal gradient bar that starts from the bottom left and extends towards the top right, covering the lower half of the slide.





Staff / visitor and late pupil entrance

Pupil entrance



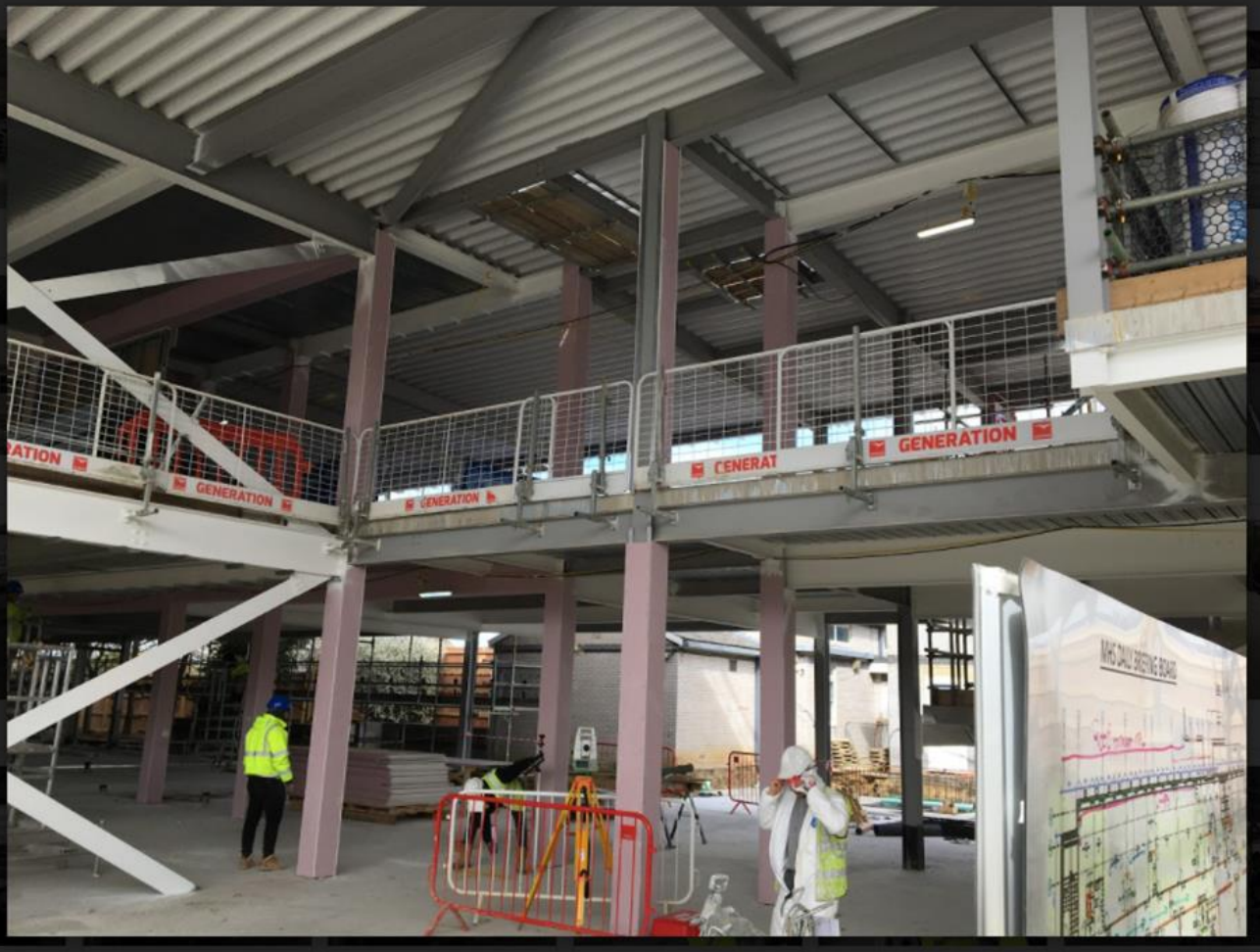
Safety briefing before we  
went round the site







New hall



Looking up in the new hall



Staff selfie in the new hall!



Where the old school  
will join the new school

Where the pupil  
entrance will be







Staff terrace

Staff room



**Above:** Site Eye view 1500hrs Friday 23<sup>rd</sup> April 2021  
**Below:** Roof VCL installed and Insulation delivered

Looking from the eye in the sky



Up on the roof (no access to staff or pupils)









Folding out wall pocket tables



Downstairs looking along the Pathway 1 corridor

**Above:** Ground Floor Corridor viewed from gridline 2 looking East



Downstairs, ground floor, Pathway 1 classes 4-8  
looking at the playground







Upstairs looking along the corridor

**Above:** First Floor Corridor viewed from gridline 2 looking East



Upstairs, first floor classrooms 14-18

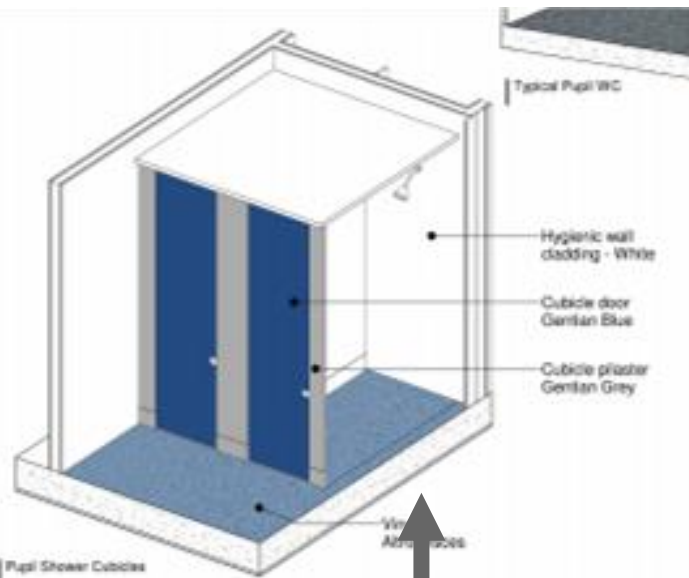
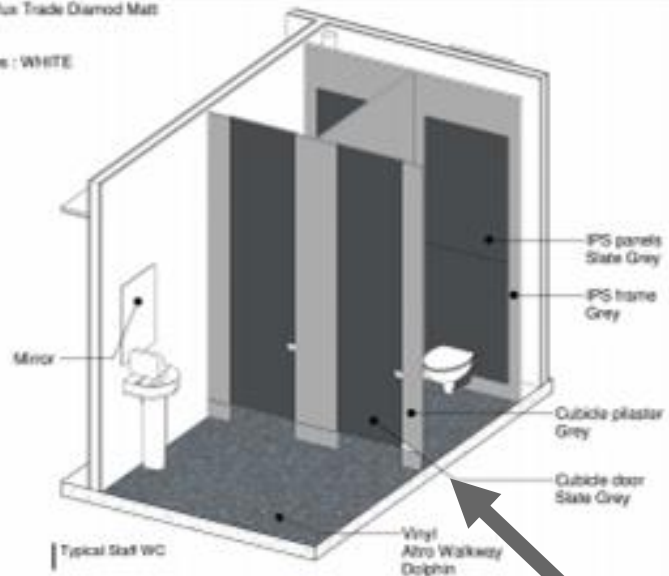
**Above:** Gridline E/1-9 First Floor SFS and CP board installed





Wall Finish : White Dulux Trade Diamond Matt

Skirting and Architraves : WHITE



pozioni

Staff toilets

Pupil toilets



Classroom cupboard (it will have doors!)







Lots of insulation to keep the school warm in winter and cool in summer (fingers crossed!)



What the blue playground looks like from the roof!







John the builder in the Pathway 1 playground!

School field from the first floor







New height adjustable tables for Pathway 1 rooms (they won't be green!)





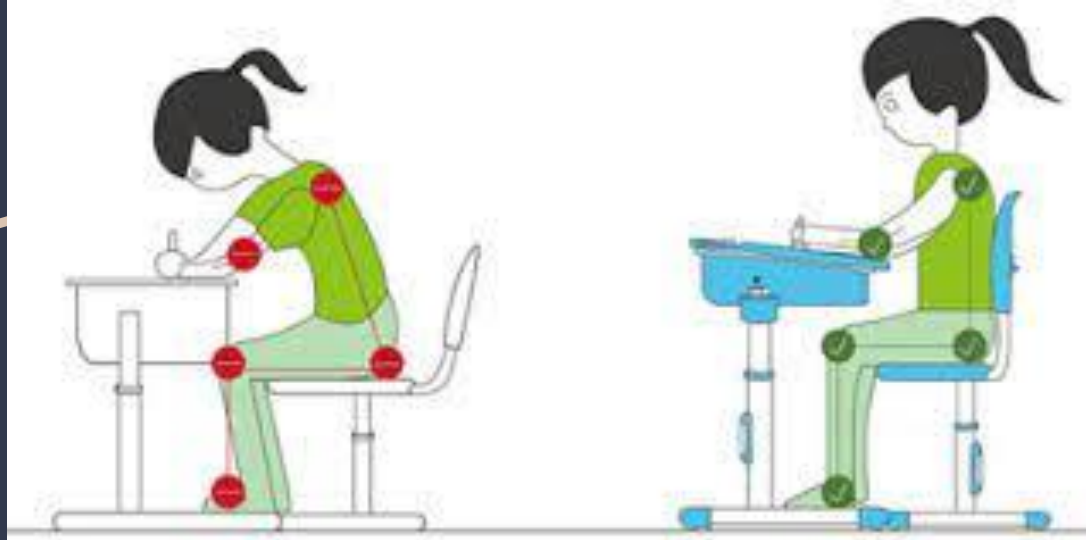
An extra new cupboard for the new classrooms





New pupil chairs (they come in different sizes so you will all have the right one)

They help you to sit correctly and look after your back and posture





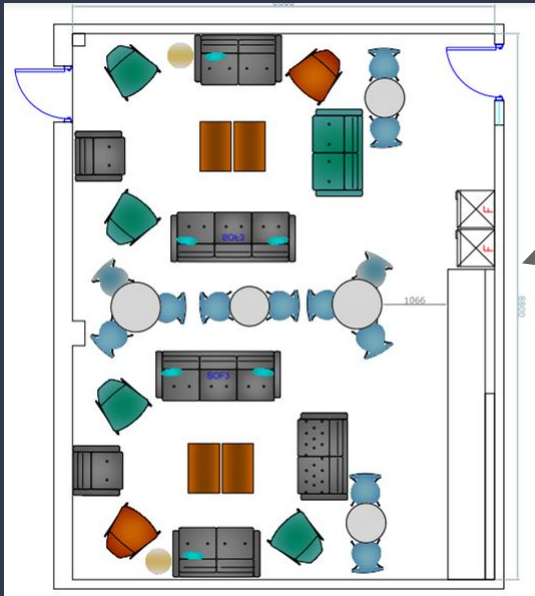
New tables for KS3/4

Some smaller for Years 7/8

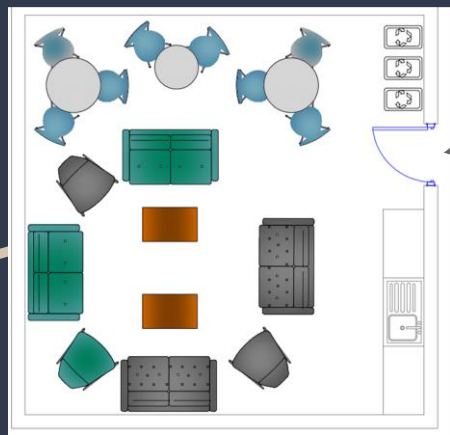


Two height adjustable ones for every class





Staff room in new building

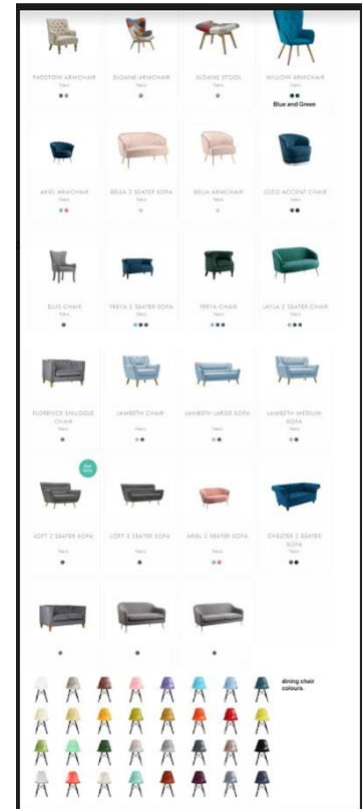


Staffroom in 6th form (currently room 61)



Very different look for the staff room!

(not exact colours and shapes)



# Timeline

1. June: staff and pupils find out which tutor groups and rooms they will have for September
2. Staff pack in July
3. The build team move everything over the summer holiday
4. Our own team move save good computers and furniture to be used around the rest of the school over the summer
5. 1st Sept: Staff have two training days and three days to get the rooms ready for pupils in the new building
6. 8th Sept: Pupils come back to school!!!!!!!!!!